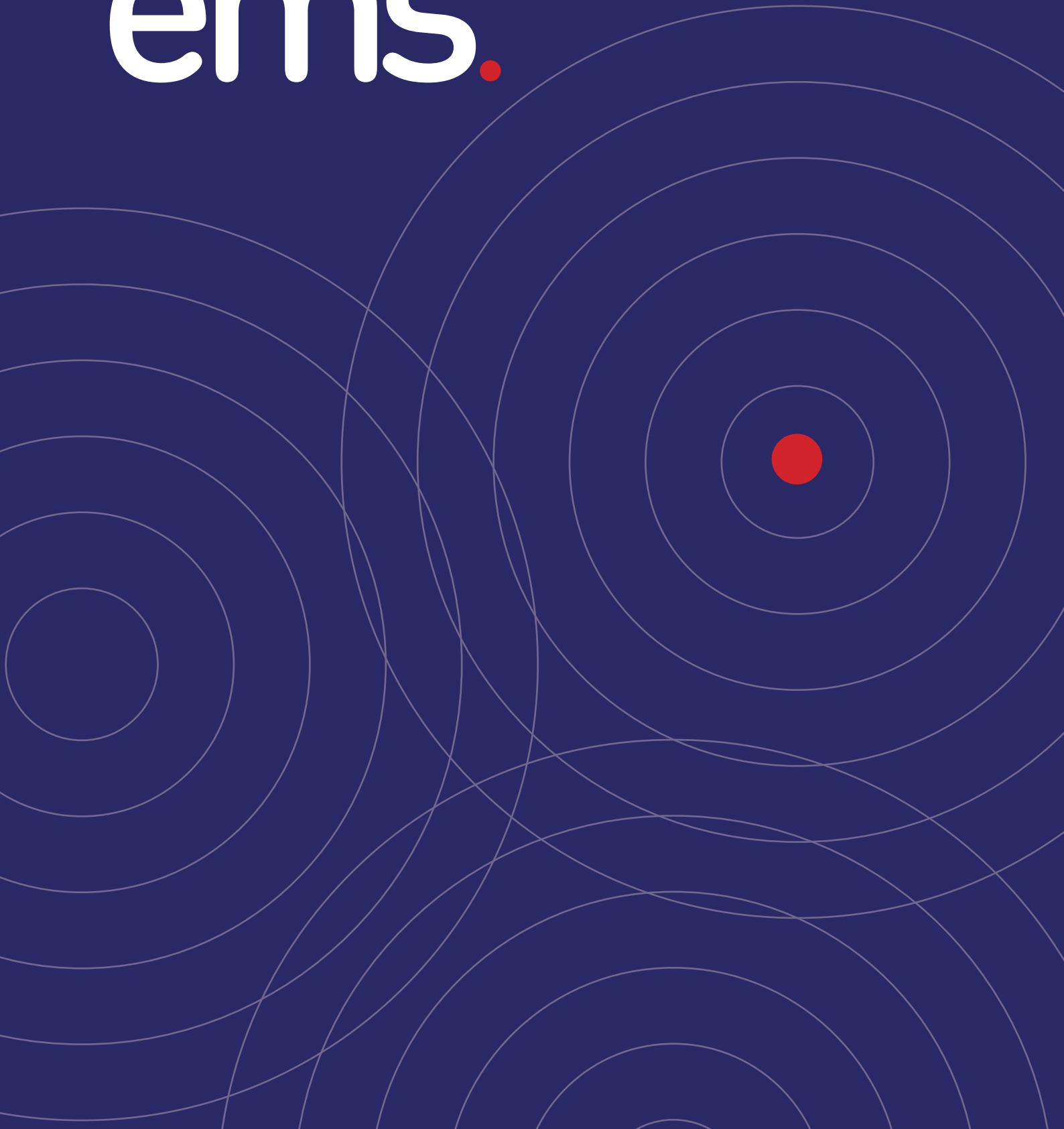


Our new service for  
effective pest control  
**ems.**



# Our **electronic monitoring service** is the latest in targeted pest control technology

Improved accuracy

Increased effectiveness

24/7/365 monitoring

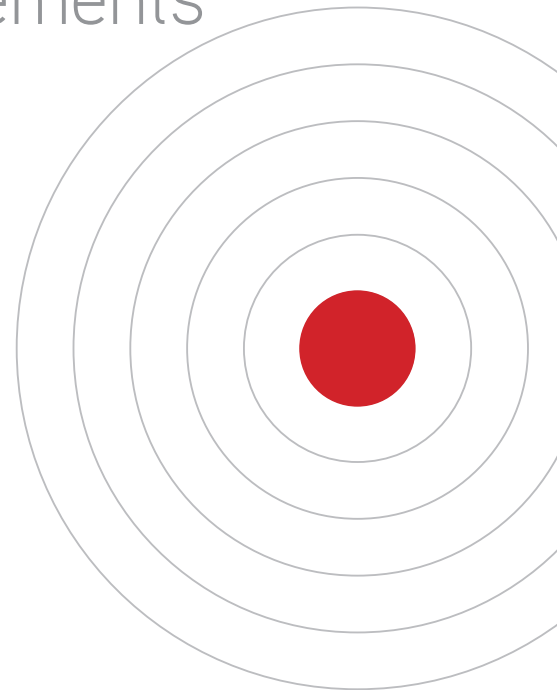
Adapts to individual requirements

Quick response

Discreet and unobtrusive

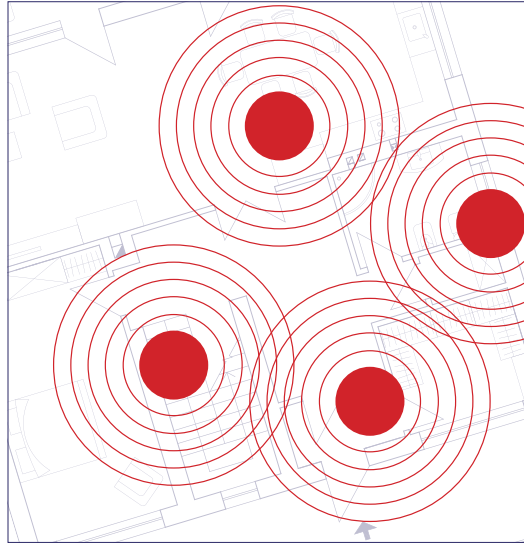
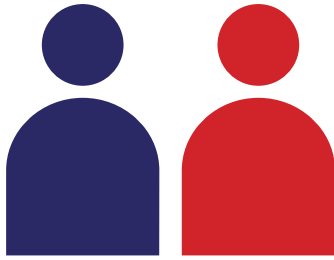
Low environmental impact

Real time data



**adams.**  
PEST CONTROL

1 We understand the importance of preparatory observation and assessment. Before we install your ems we will complete an on-site consultation with relevant personnel giving us the best opportunity to listen and learn about your pest problems and requirements.



2 From the information gained at our initial consultation we review the most advantageous layout for your pest control needs and prepare a plan for effective results. On approval we will strategically position the system in place at your premises.

# 24/7/365 sensors Early warning system Comprehensive coverage Target problem

At Adams we have over 75 years experience in managing pest control with leading technology. We know our business and we understand the importance of a pest controlled environment in industries that include hospitals, restaurants and facilities that store and prepare consumables.

We work as a close knit team, our lines of communication are short and we are always ready to support our customers' needs.

We are proud of our success in pest control and ensure that we employ the latest technology. Our ems dramatically improves and supports our successful conventional pest control.

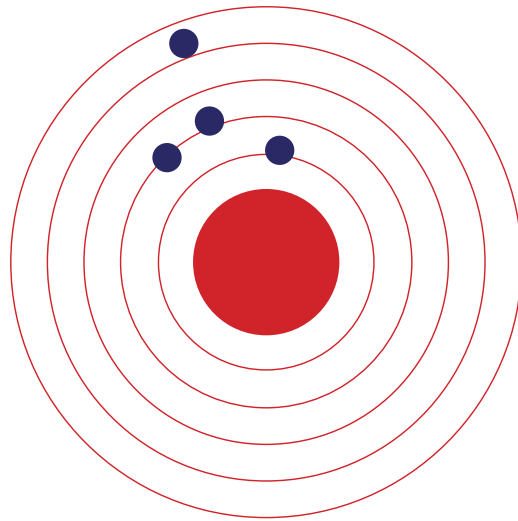
80%

CHEMICAL REDUCTION

WE CARE ABOUT THE ENVIRONMENT AND WITH EMS WE ARE ABLE TO MAINTAIN EFFECTIVENESS USING A FRACTION OF CHEMICALS

3

Unlike conventional trap and poison based pest control, which require ongoing checking, sensors continuously send data enabling us to monitor the activity of pests on your site 24/7/365.



4

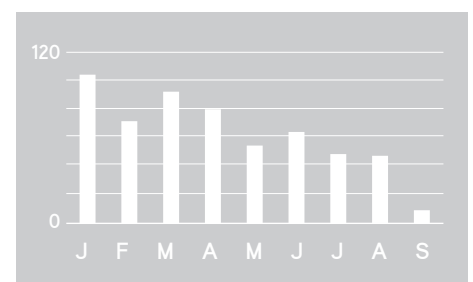
We are the first pest control company to employ a full time data analyst to monitor activity and identify 'hot spots'. This enables effective action to be completed by our field technicians who investigate possible entry points and nesting locations.

## Proactive monitoring Data gathering and analytics Brief in appropriate program

Pests don't work to a timetable, but we do 24/7/365. Our state of the art equipment is constantly monitoring your business for any unwanted pest activity so we can act quickly in the areas that need it most. Our ability to collect and review data over an uninterrupted period of time allows us to

observe pest's patterns of behaviour and address issues as they evolve before they manifest into a major problem.

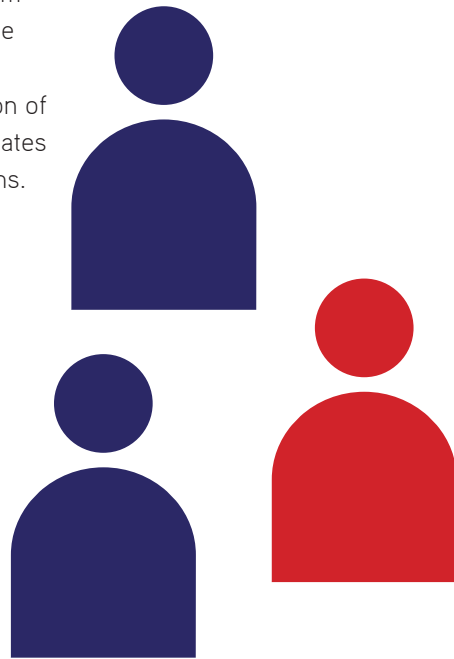
We see this proactive management of risk as the future of pest control.



RODENTS MONTH TO MONTH

5

The data gathered from ems enables fast response from our Adams team. Accurate targeting of on-site pest control and implementation of effective treatments mitigates the risk of pest infestations.



6

We collect and collate data constantly which allows us to observe patterns of pest activity and to discern and analyse mid to longer term trends. These can be dealt with at source using a tailored program for long term effectiveness and prevention. A databased approach to pest control has proven efficacy in reducing rodents onsite.

# Trained service team Manage risks Target area Address problems early

The collection of real time data, over a measurable time frame enables us not only to target acute risks in a focussed manner but also to recognise and identify trends that can be reversed.

Your Adams team can tailor your requirements and apply short to long term strategies as required.

This system enables us at Adams and you, the client, to work very much as an effective team. Any rodent problems noted by those on site can be recorded and included in the data and dealt with via immediate action or longer term strategy.

61%

RODENT REDUCTION  
COMPARED TO THE SAME MONTH  
A YEAR LATER.



# ems.

adams.  
PESTWEB



## MELBOURNE.

252 Normanby Road  
South Melbourne, VIC 3205  
+61 3 9645 2388  
info@adamspest.com.au

## ADELAIDE.

6 Leane Avenue  
Allenby Gardens, SA 5009  
+61 8 8297 8000  
sa@adamspest.com.au



# adams.

PEST CONTROL

[www.adamspestcontrol.com.au](http://www.adamspestcontrol.com.au)